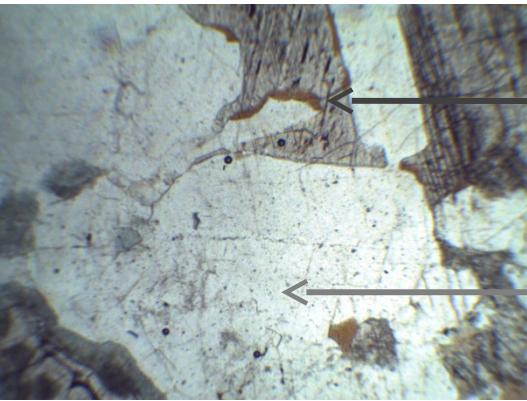


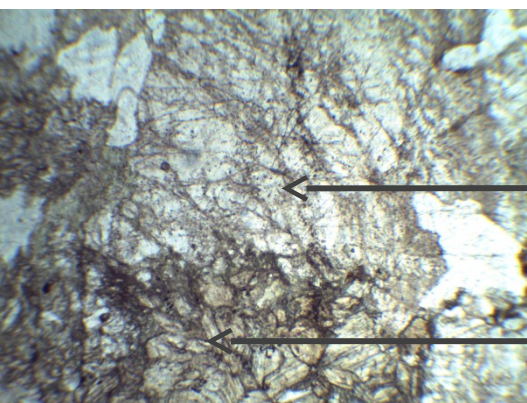
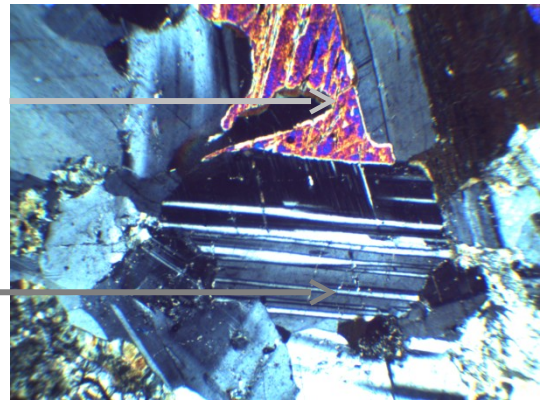
# Capture d'écran des minéraux observés au microscope polarisant pour différentes roches



Gabbro

Pyroxène

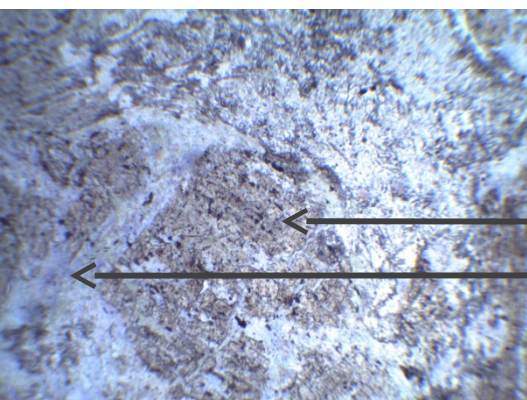
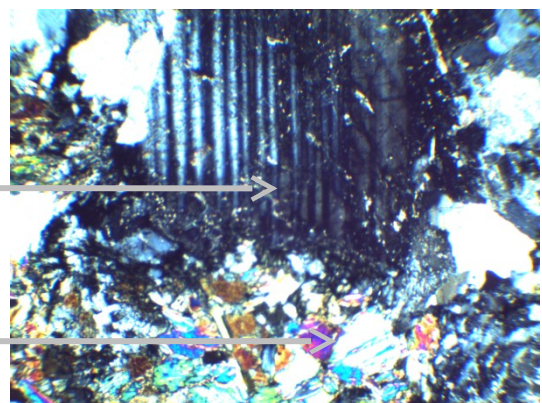
Feldspath plagioclase



Métagabbro à  
Hornblende du Chenaillet

Feldspath plagioclase

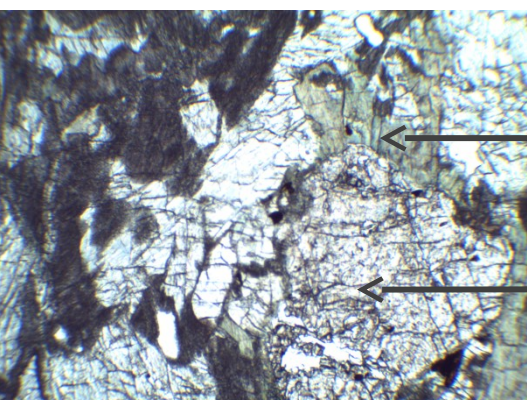
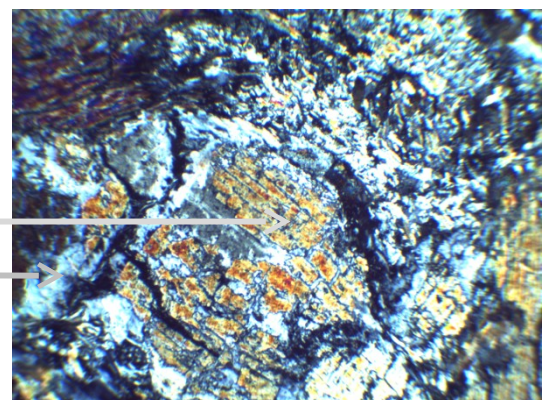
Hornblende



Métagabbro à  
glaucophane du Queyras

Pyroxène

Glaucophane



Eclogite du Mont Viso

Jadéite

Grenat

