

Complète :

$$4 + 4 = \underline{2} \times \underline{4} = \underline{8}$$

$$7 + 7 + 7 = \underline{3} \times \underline{7} = \underline{21}$$

$$5 + 5 + 5 + 5 + 5 + 5 = \underline{6} \times \underline{5} = \underline{30}$$

$$8 + 8 + 8 + 8 = \underline{4} \times \underline{8} = \underline{32}$$

Comme  $6 \times 9 = 54$  alors on  $9 \times 6 = \dots$  **54**

Comme  $6 \times 7 = 42$  alors on  $7 \times 6 = \dots$  **42**

Comme  $8 \times 9 = 72$  alors on  $9 \times 8 = \dots$  **72**

$$7 \times \underline{2} = 14$$

$$\underline{3} \times 8 = 24$$

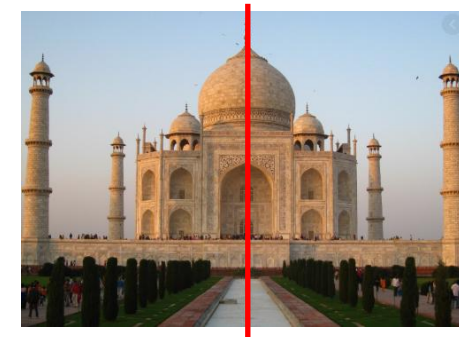
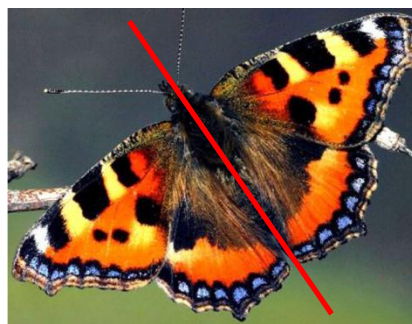
$$\underline{5} \times \underline{5} = 25$$

$$\underline{1} \times 9 = 9$$

$$7 \times \underline{3} = 21$$

$$\underline{6} \times \underline{6} = 36$$

Recherche et trace les axes de symétrie :



Complète :

$$\underline{3} \dots \times \underline{7} \dots = \underline{21}$$



$$\underline{3} \dots \times \underline{8} \dots = \underline{24}$$



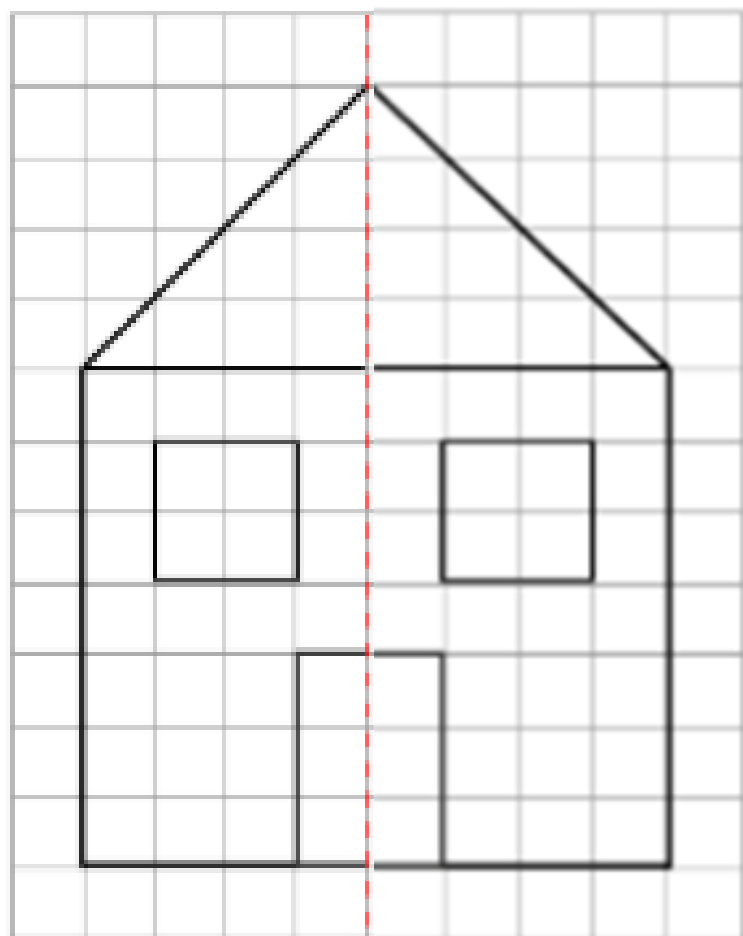
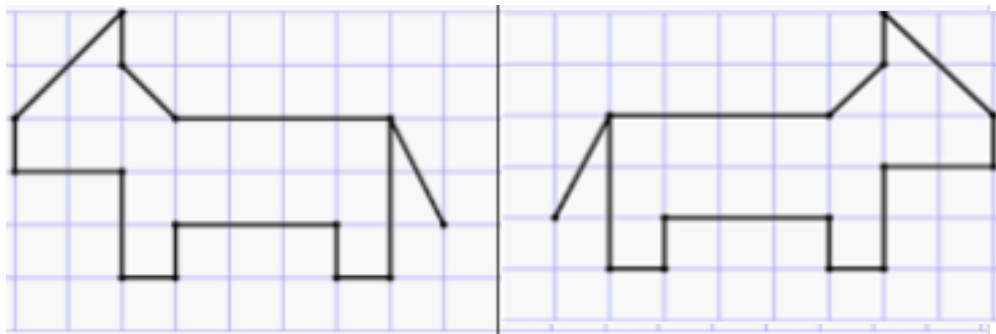
$$\underline{6} \dots \times \underline{8} \dots = \underline{48}$$



$$\underline{4} \dots \times \underline{9} \dots = \underline{36}$$



Reproduis la symétrie de chaque dessin :



Chronomaths : Chronomètre : moins d'1 minute !

Fiche calcul (3)	Fiche calcul (4)
$173 + 20 = 183$	$151 - 20 = 131$
$119 + 20 = 139$	$194 - 20 = 174$
$20 + 525 = 545$	$231 - 20 = 211$
$474 + 20 = 494$	$720 - 20 = 700$
$370 + 20 = 390$	$215 - 20 = 195$