



A Christmas card

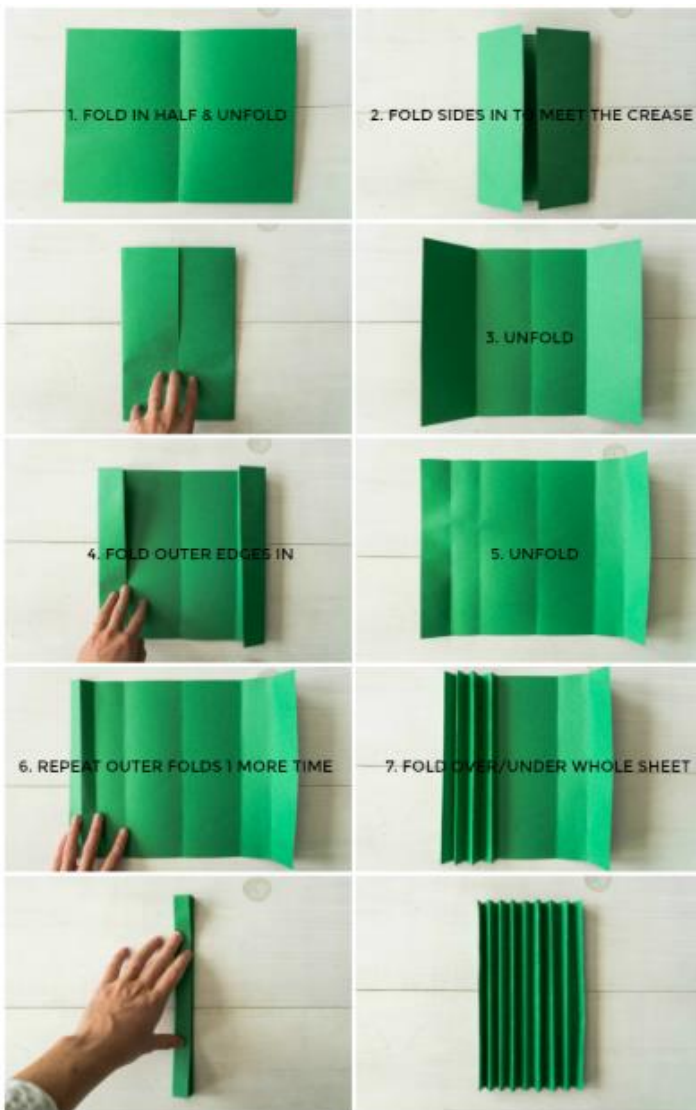
You need:

- Colored construction paper
- White copy paper
- Glue stick + hot glue gun
- Scissors
- Black marker
- A ruler

The Christmas tree

Step 1: take a piece of green paper and fold it like an accordion.

Step 2: cut it at 5cm, 4cm, 3cm, 2cm and 1cm



Step 3: Taking a new piece of paper, fold it in half to be the card. Starting with the 5cm piece (which will be the tree's bottom), glue the last flaps horizontally to the center of the card. It will create a fan/rainbow effect. Place a line of hot glue in the middle to secure that the piece won't pop completely out.

Repeat this with the other green pieces, placing them above the one before. It will go 5cm on the bottom, 4cm above, 3cm, 2cm, then 1cm, making a tree!



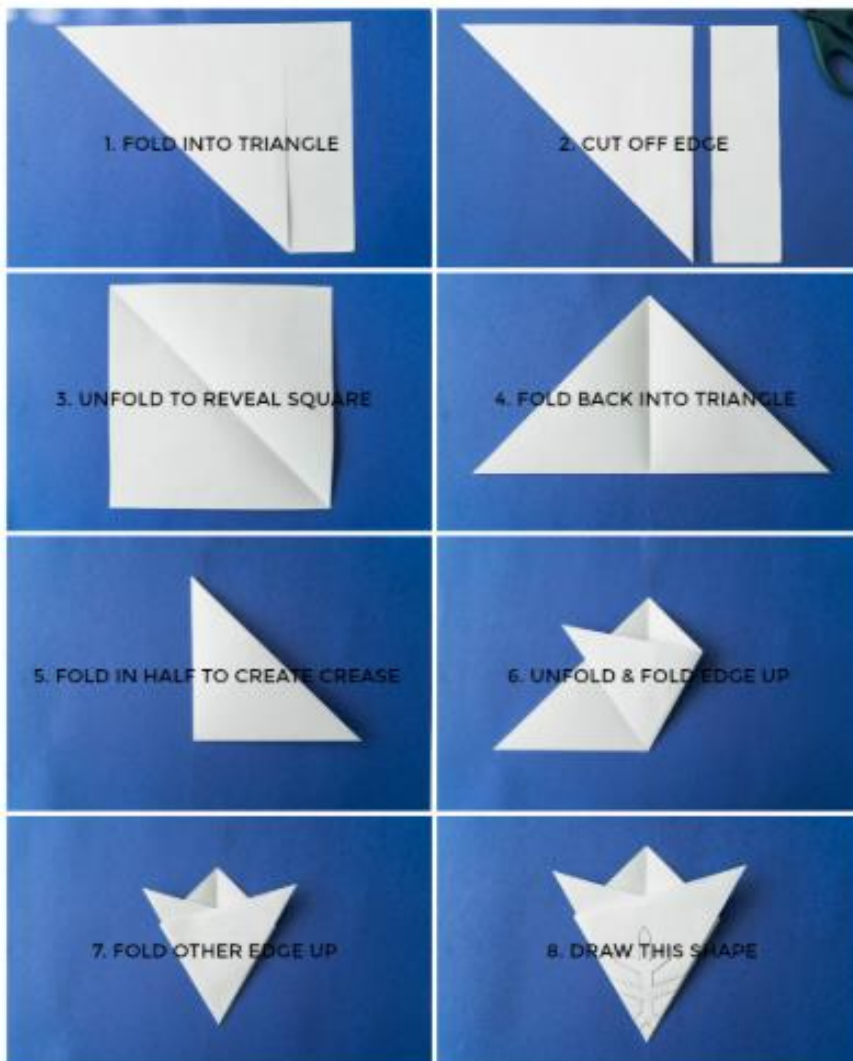
Step 4: Cut out a star and fold it in half. Glue it to the top of the tree in the card fold. Then cut out a rectangle of black or brown paper and fold it in half, then fold the edges in and glue those edges on the card to be the stump of the tree.

Cut out squares and rectangles for the gift boxes and then glue them down under the tree. Draw ribbon and bows on the boxes.



The snowman

Step 1: Follow this guide for how to make the perfect paper snowflake.

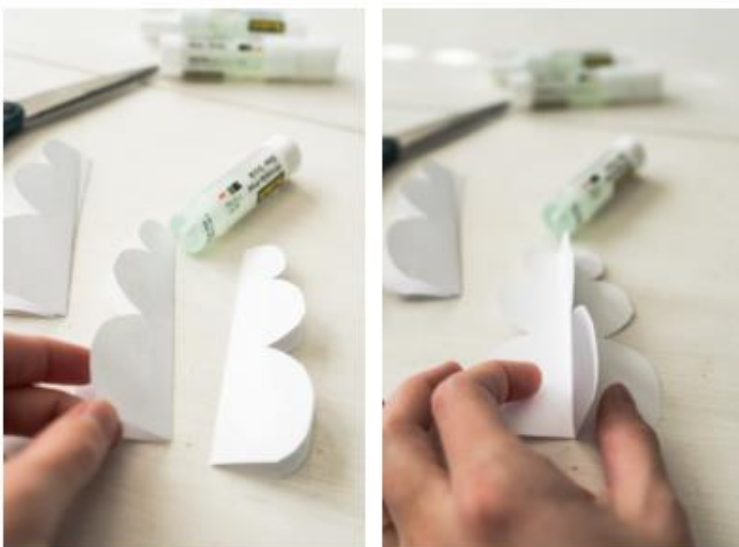




Step 2: Fold a new piece of copy paper like the Christmas tree card, into an accordion but with 2.5cm folds instead of 1cm folds. When it's folded up, cut out a half snowman shape on one side of it.



Step 3: Unfold to reveal a pop up snowman! The pieces will need glued together since when you cut the snowman out, it cut on the fold line to keep the paper together. Just take a glue stick and glue the pieces that fell apart to each other. Then glue the outer flaps of the snowman down to the center of a piece of paper folded in half to be the card.



Step 4: Add black dots as buttons to the snowman and draw little carrot nose on one of the flaps so that you can see it. Draw arms and a hat if you want and whatever else to make your snowman unique! You could give him gloves, a scarf, or a mouth. Then glue your snowflakes around the snowman. Only glue one half of each snowflake down so that they pop up too!

