

The Spelling Bee contest (1)

1 Look at the document in your textbook, then look at this one. Spot the 7 differences.

2 Match the elements from the original picture with their categories.

Sat. January 11 /
Sun. January 12

Kahilu Theatre
(Hawaii)

The annual Putnam
County Spelling bee

7 p.m. / 2 p.m.

25th

poster

type of
document

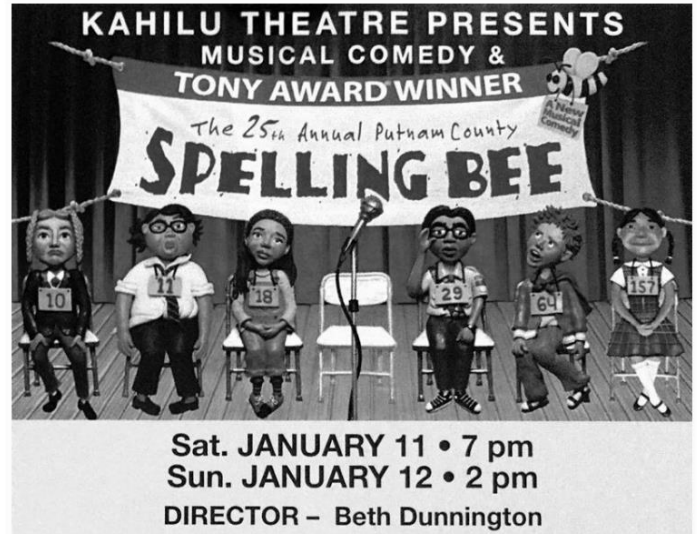
date

ordinal
number

event

time

place



3 Let's recap! Present the document filling in the blanks with the words above.

- a) The document is a (type of document) for the (ordinal number) (event).
- b) The competition takes place at (place). It starts on (date) at (time).
- c) On the poster, we can see (number) participants, (number) chairs, a (animal) and a microphone.