

# MOBILITE ANGLETERRE PLYMOUTH



PLYMOUTH  
DEVON

# PLYMOUTH

- ❖ 258 700 habitants
- ❖ Ville portuaire
- ❖ 20% d'étudiants

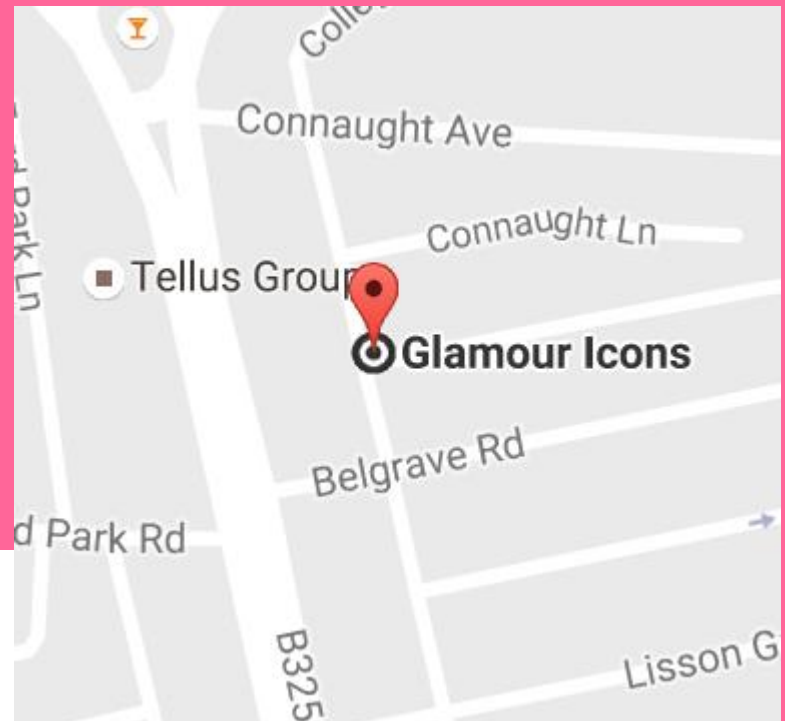


# **Glamour Icons Fashion**

Stage du 23 octobre  
au 1<sup>er</sup> Novembre 2016

# Glamour icons

Adresse : Mutley Plain, Plymouth PL4 6JJ, Royaume-Uni



*Glamour Icons Mini Stitches  
School of Fashion*



*Learn Sew & Stitch  
Create Something New*

# Service de retouches de vêtements

## 1 responsable :

Trishia PETRI

## 2 stagiaires:

Céline BABIN

Anne DESCHATEAUX

## Horaires de travail:

- 10h – 12h30
- 13h30 – 15h



# L'atelier



Table de coupe



## Les machines

- Surjeteuse
- Piqueuse plate
- Une table à repasser



Stock de fils

**Client:**

High street fashion/ready to wear

**Background:**

Glamour icons is a bespoke yet unique brand targets female looking for good value for money to a high constructed

**Age range:**

From 15 and over / we trust the fashion stylist in each individual

Requirements: design day outfit: a collection aimed to make you feel free and comfortable, sexy, unique and confident

**Requirements:**

Design outfit/garment or accessories: item of clothing, bag jewellery, based on the following themes

**Theme 1:**

Ethnic/tribal/possibly african (specifically Masai/body art)/south america

Contemporary tribal influences

Suggested colours scheme: bright colours/ red, orange, cool&bright blues/ warm green and purples

**Theme 2:**

Vintage bottle; design details around the bottle, gems and beading

Suggested colours warm pastel colours and rich accents

Accessories: shoes/ bags/ jewellery

Beading/ weaving

Suggested colours: bright and iridescent accent of sharp colours to complement the designs

**Constraints:**

Durable/ wearable/ washable

Strong visual impact for the target market

Economical to make from suitable and durable materials and look good

Fabric swatches and design sketches must at some stage be shown in relation to human body

It must, along with all support work, be completed by specific deadline

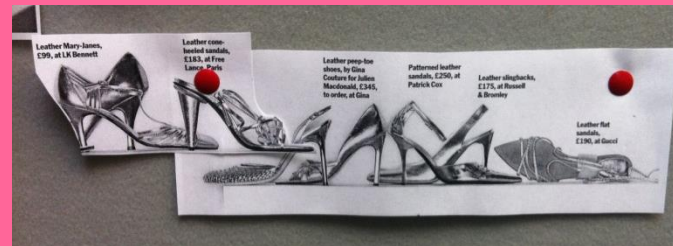
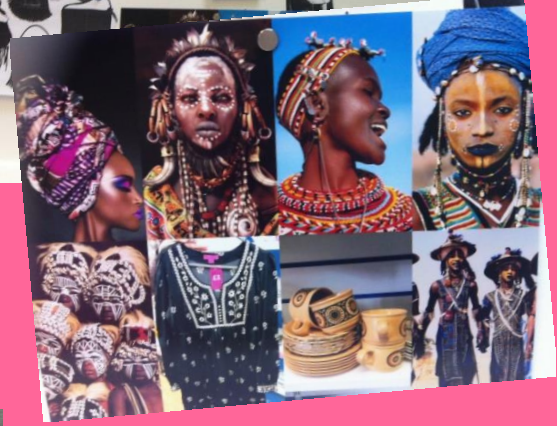
Recherches dans les journaux, magazines, livres,...



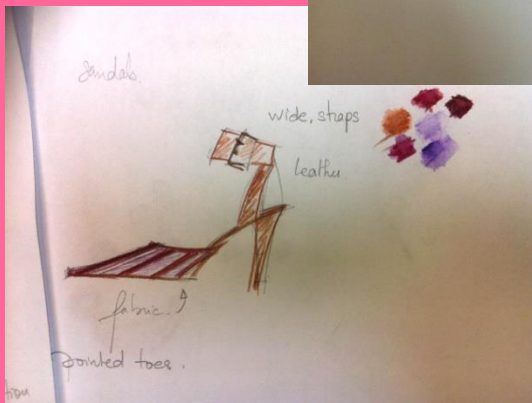
Enrichissement du vocabulaire



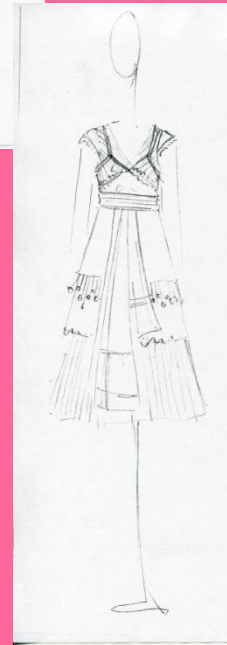
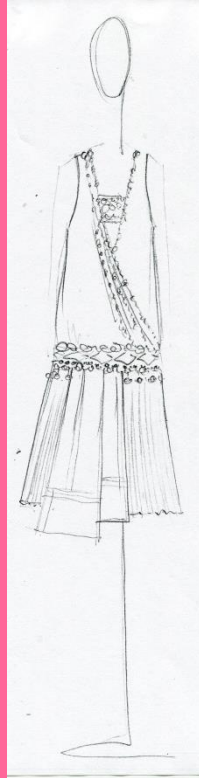
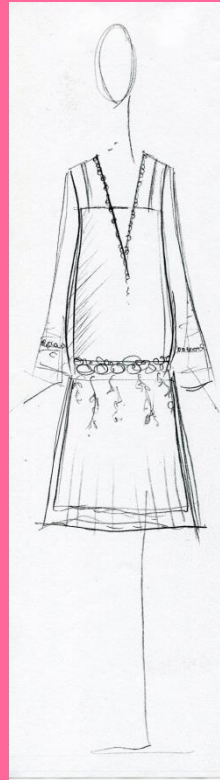
# Construction d'un MOOD BOARD



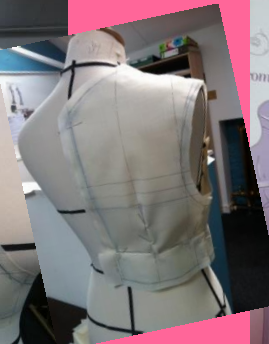
# Croquis d'analyse



# Recherches projet



# Mise en volume d'une base



# Mise en couleur et choix textile



# Les retouches



Ourlet du bas de  
robe cocktail

# Transformation d'une parka en blouson



# Transformation d'une encolure de robe





# Raccourcir les bas de manches d'une veste d'homme



# Patronnage:


Commande client à partir d'un modèle existant

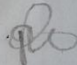


# Cahier des charges des modifications à prévoir

- Agrandir la taille de 3 cm
- 1 fente au milieu dos
- 2 poches passepoilées à rabats
- 1 poche coupée poitrine
- 2 poches intérieures

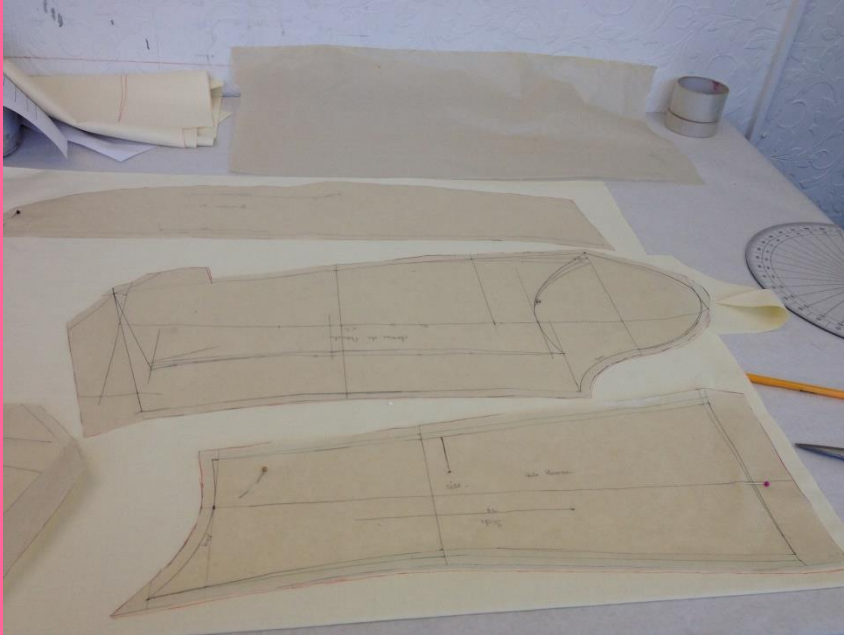
# Prise des mesures clients (documents entreprise)

  
**BOOKING IN FORM**

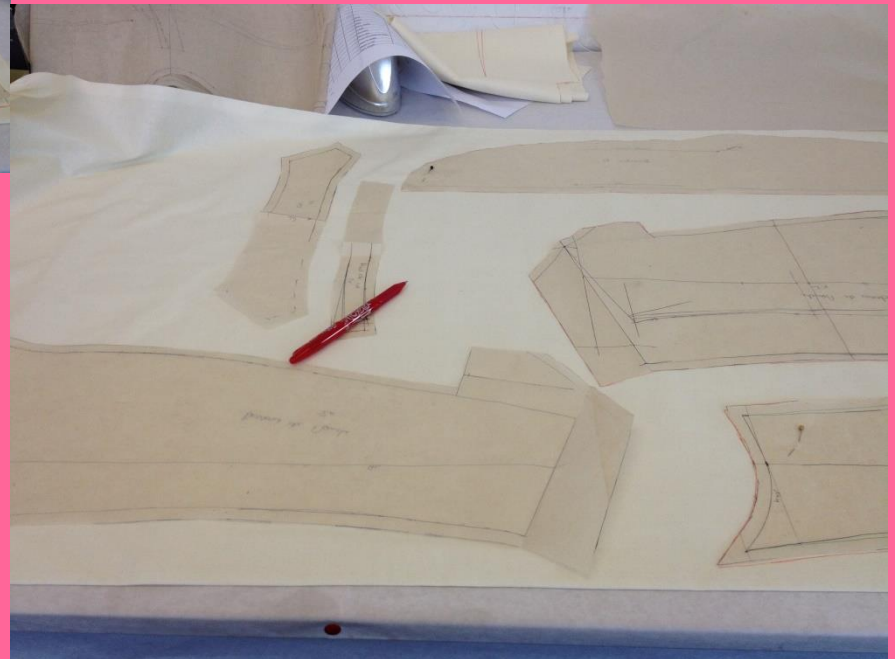
<b>CUSTOMER NAME</b>	Bob.
<b>ALTERNATIONS (ITEM)</b>	
<b>Bespoke</b>	Suit Jacket
<b>DESCRIPTION</b>	Made to measure
<b>DURATION</b>	2-3 wks. ??
<b>SIGNED BY</b>	
<b>COMPLETED BY</b>	

Glamour Icons Individual Measurements			
Name			
	Style: No		
	Colour: Green and White		
	Fabric: Lycra		
Bust			
Waist			
Hips			
Back width			
Chest			
Shoulder			
Neck size			
Front shoulder to waist			
Nape to waist			
Waist to hip			
Skirt length			

# Le Patronnage



A partir de la  
veste « originale »



# Assemblage de la toile



# Montage du col





# Essayage avec le client




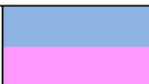


Retouches à prévoir:  
Allonger les manches de 2,5 cm



# Planning MOBILITE Anne DESCHATEAUX

		OCTOBRE										NOVEMBRE			
		20	21	22	23	24	25	26	27	28	29	30	31	1	2
	Ourlet Robe Cocktail Transformation Parka en Blouson						X								
	Encolure Robe							X							
	Prise des mesures Patronnage de la veste						X	X							
	Assemblage du prototype							X							
	Essayage client								X						
	Retouches patronnage								X						
	Bas de manche veste												X		
	Pose des bolducs Moulage du haut "Céline"												X		
	Patronnage du haut "Céline"													X	



	Voyage CDG Plymouth Ecole		Week-end (visites)
			Stage

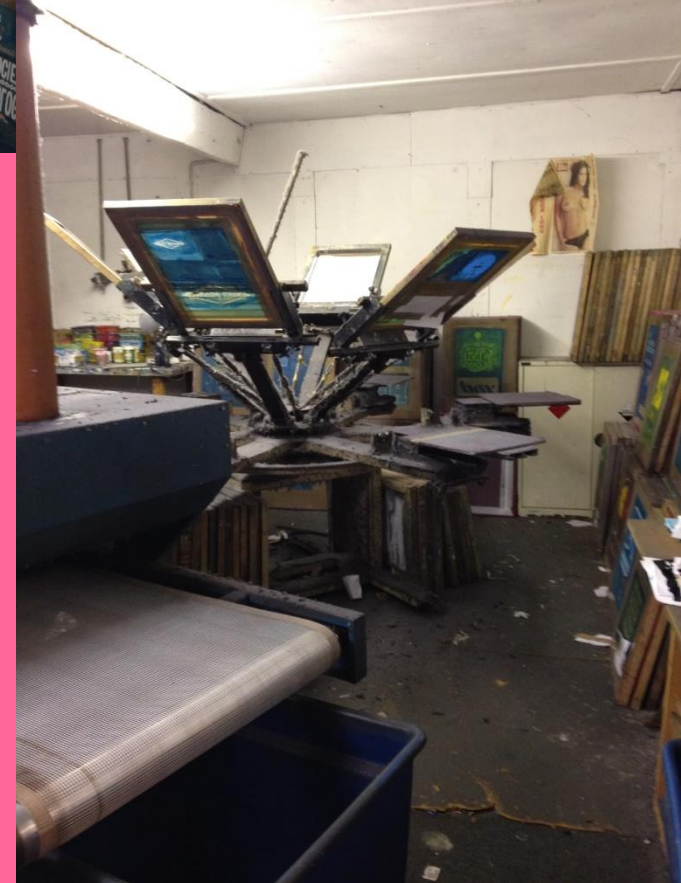
# Annexes: Visite d'un atelier de marquage tee-shirts



Cadres de sérigraphie

# 4 techniques:

## 1 - Sérigraphie



# 2 - Impression jet d'encre



# 3 - Impression de flocage



# 4 – Par transfert



Nous remercions Trishia Petri  
Pour son accueil



# Retour à Poissy

